



## Early Journal Content on JSTOR, Free to Anyone in the World

This article is one of nearly 500,000 scholarly works digitized and made freely available to everyone in the world by JSTOR.

Known as the Early Journal Content, this set of works include research articles, news, letters, and other writings published in more than 200 of the oldest leading academic journals. The works date from the mid-seventeenth to the early twentieth centuries.

We encourage people to read and share the Early Journal Content openly and to tell others that this resource exists. People may post this content online or redistribute in any way for non-commercial purposes.

Read more about Early Journal Content at <http://about.jstor.org/participate-jstor/individuals/early-journal-content>.

JSTOR is a digital library of academic journals, books, and primary source objects. JSTOR helps people discover, use, and build upon a wide range of content through a powerful research and teaching platform, and preserves this content for future generations. JSTOR is part of ITHAKA, a not-for-profit organization that also includes Ithaka S+R and Portico. For more information about JSTOR, please contact [support@jstor.org](mailto:support@jstor.org).

# BULLETIN OF THE ART INSTITUTE OF CHICAGO

VOLUME II

OCTOBER, 1908

NUMBER II

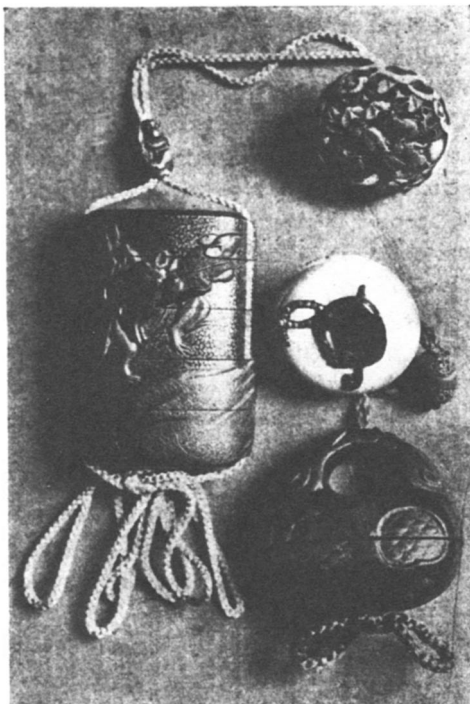
**I**N the middle pages of this BULLETIN (pages 23 to 26) will be found the programme of successive exhibitions, lectures, etc., to be held at the Art Institute this season. This portion of the Bulletin may easily be detached and preserved separately.

TWO INROS OR JAPANESE MEDICINE CASES.  
From the Collection presented by Mrs. George T. Smith, 1907

At the right hand of the cut is a priest's inrō of red and gold lacquer in the form of a Mokgyō. The top is of heads of dragons, and on the sides are scales of fish and an imperial crest. Ojime, a carved silver bead showing the various articles used by the Buddhist priests in their ceremonies. Netsuke, an ivory button inlaid with jade, coral, and tortoise shell. Signed Akiharu.

At the left hand an inrō of Gyōbu lacquer inlaid with gold. Design of rats pulling a treasure bag. The coats on the rats are inlaid with Somada and Tuishu lacquer. By Tōyō. Ojime, a carved brass monkey with gold coat. Netsuke, open work carved ivory with silver and Shibuichi inlay. Signed, but names too worn to decipher.

Arrangements have been made with Mrs. J. B. Sherwood to conduct visitors through the galleries and explain the collections, without charge, at regular intervals. These classes or gallery tours will be held every Thursday at 3 p. m., beginning Oct. 8. Members and visitors of all kinds will be welcome.



## THE COMING THREE MONTHS

The most active season of the year is at hand. Upon Tuesday, October 20, the Annual Exhibition of American Oil Paintings and Sculpture will be opened by an afternoon Reception, at which the ladies of the Fortnightly and Woman's Clubs, the Antiquarian Society, and the Municipal Art League will assist. This exhibition is made up as follows: About 50 pictures of American painters in Europe are selected by Miss Sara Hallowell, the representative of the Art Institute, from